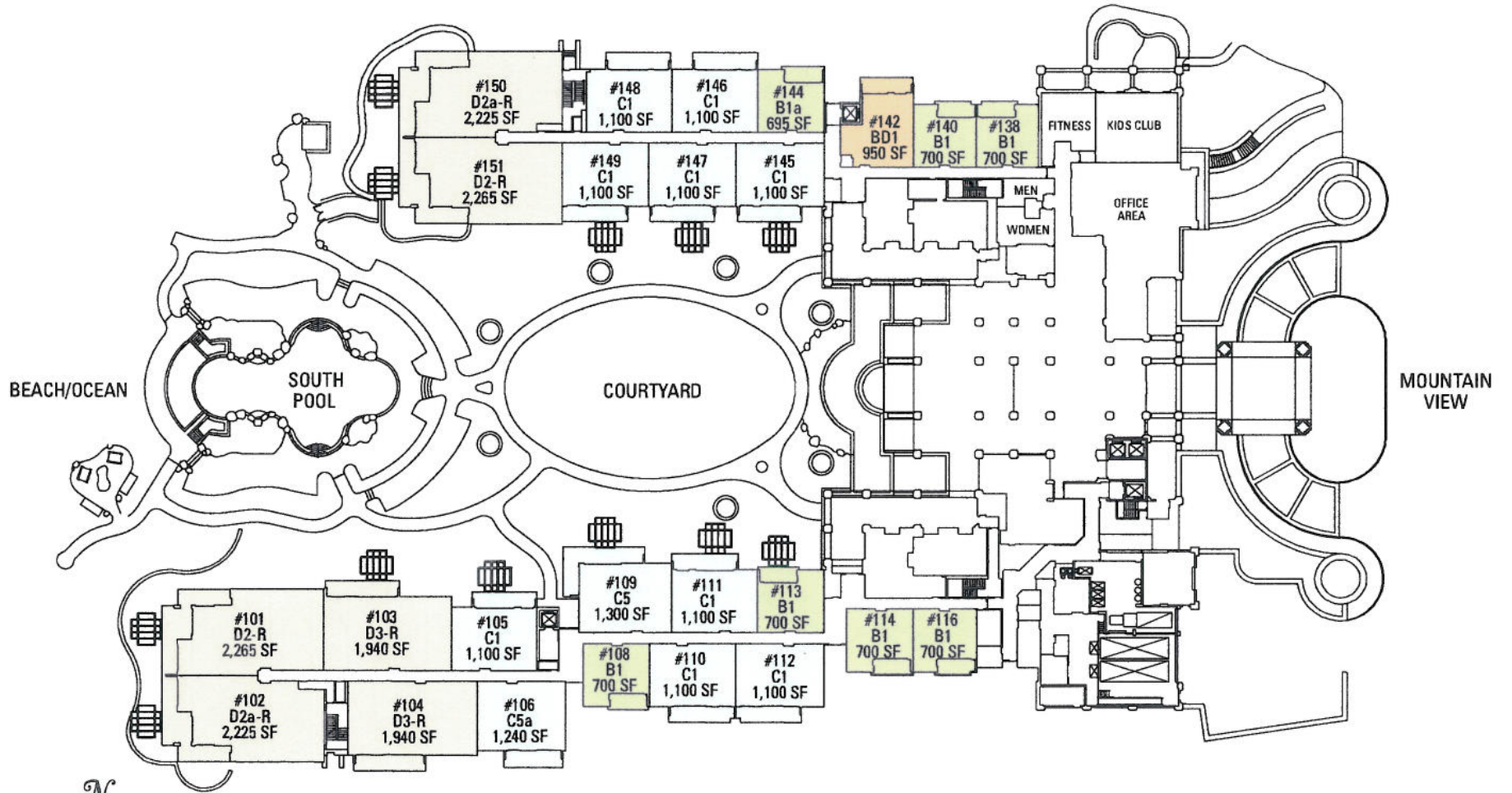


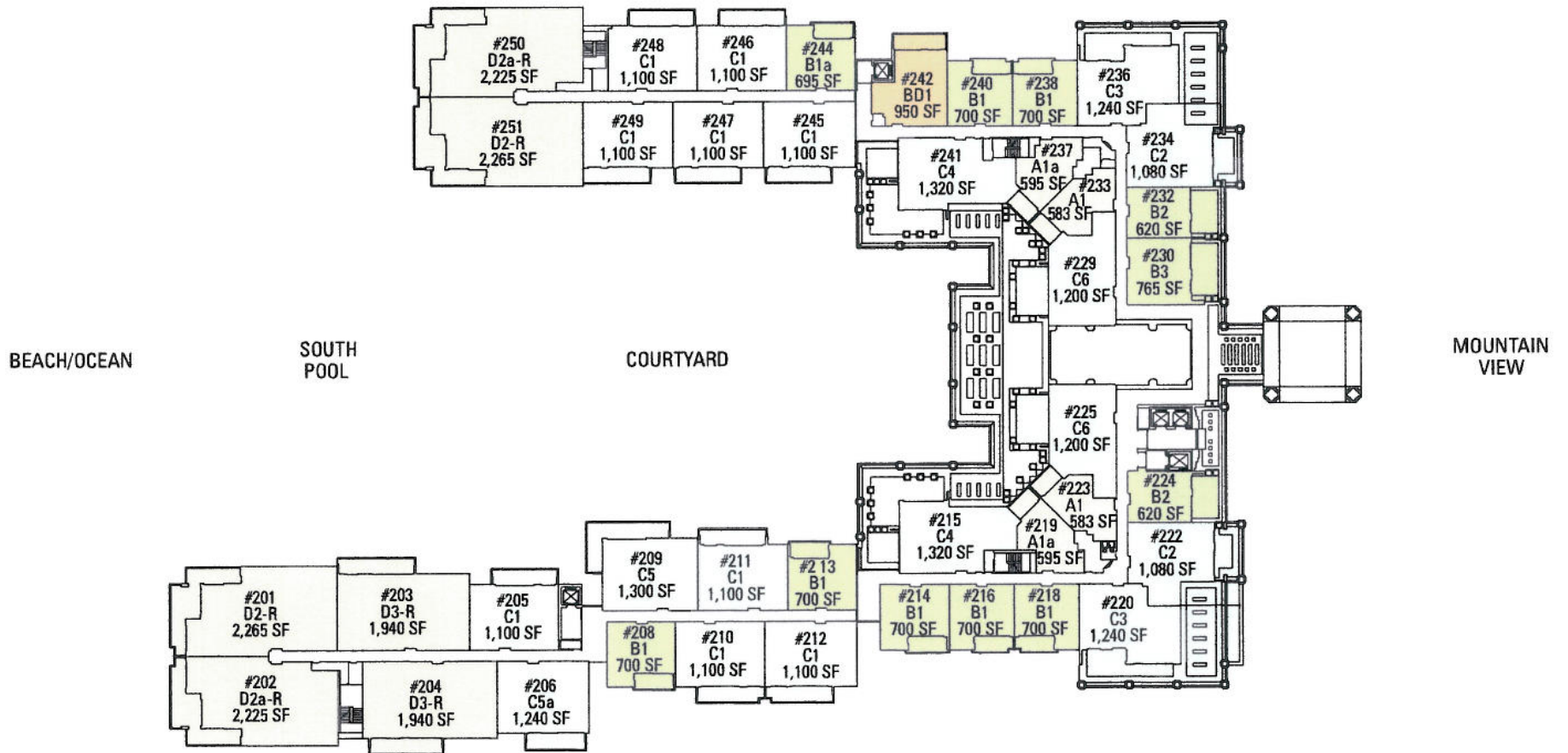
# LOBBY FLOOR



- A Studio Suite
- B One Bedroom Suite
- BDI One Bedroom & Den
- C Two Bedroom Suite
- D Three Bedroom Residence
- E Three Bedroom Residence

Subject to change. Developer reserves the right to make changes and modifications at any time without notice.

# SECOND FLOOR



- A Studio Suite
- B One Bedroom Suite
- BD One Bedroom & Den
- C Two Bedroom Suite
- D Three Bedroom Residence
- E Three Bedroom Residence

Subject to change. Developer reserves the right to make changes and modifications at any time without notice.

# THIRD FLOOR

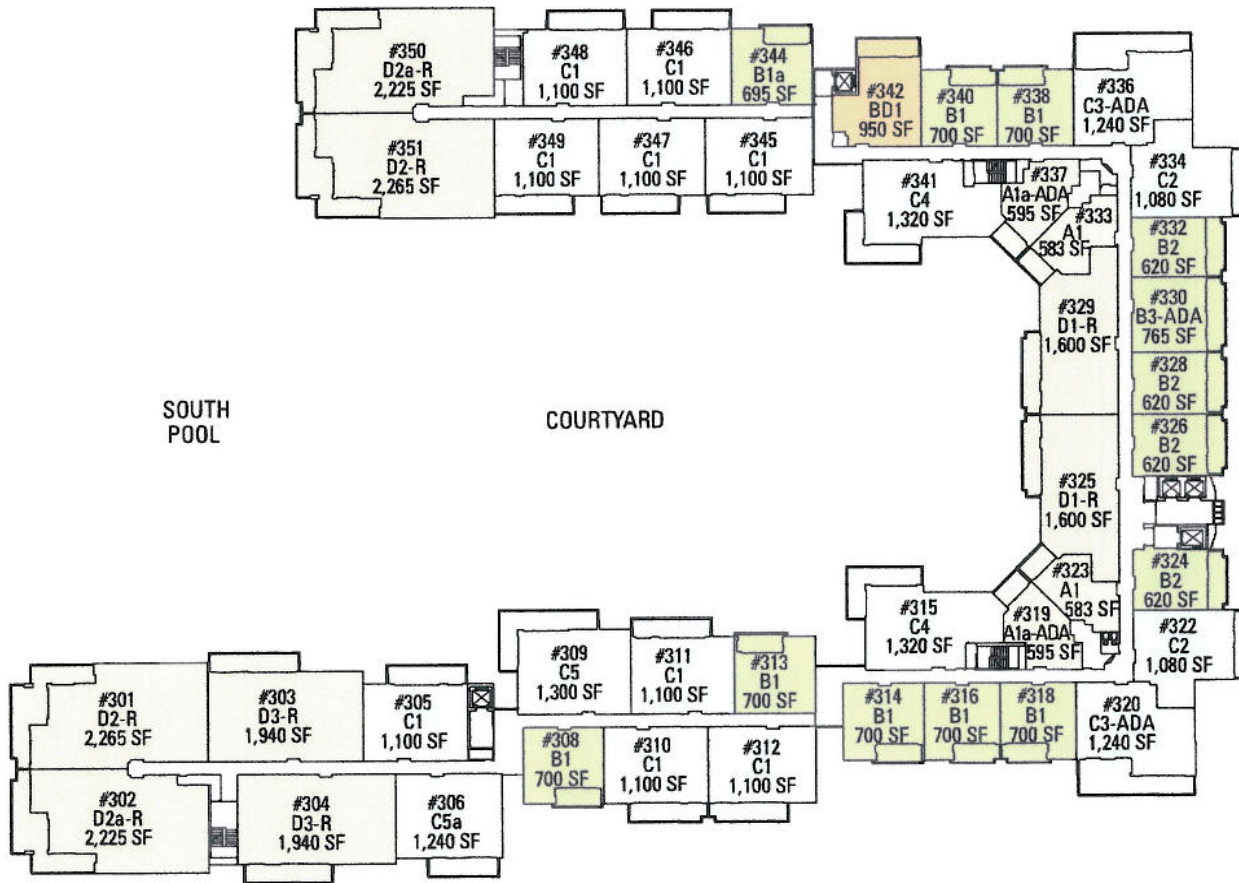


BEACH/OCEAN

SOUTH POOL

COURTYARD

MOUNTAIN VIEW



Subject to change. Developer reserves the right to make changes and modifications at any time without notice.

- A Studio Suite
- B One Bedroom Suite
- BDI One Bedroom & Den
- C Two Bedroom Suite
- D Three Bedroom Residence
- E Three Bedroom Residence

# FOURTH FLOOR

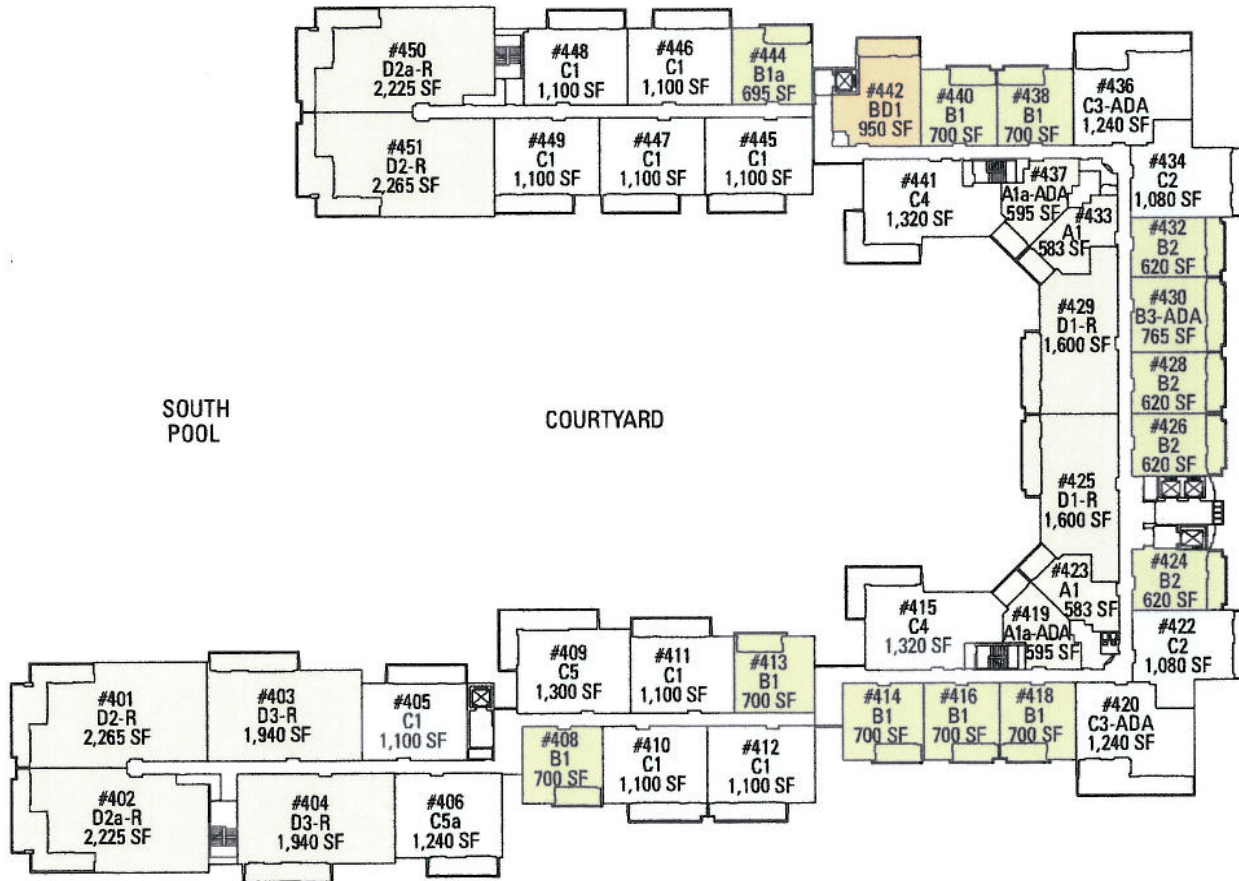


BEACH/OCEAN

SOUTH POOL

COURTYARD

MOUNTAIN VIEW



- A Studio Suite
- B One Bedroom Suite
- BDI One Bedroom & Den
- C Two Bedroom Suite
- D Three Bedroom Residence
- E Three Bedroom Residence

Subject to change. Developer reserves the right to make changes and modifications at any time without notice.

# FIFTH FLOOR

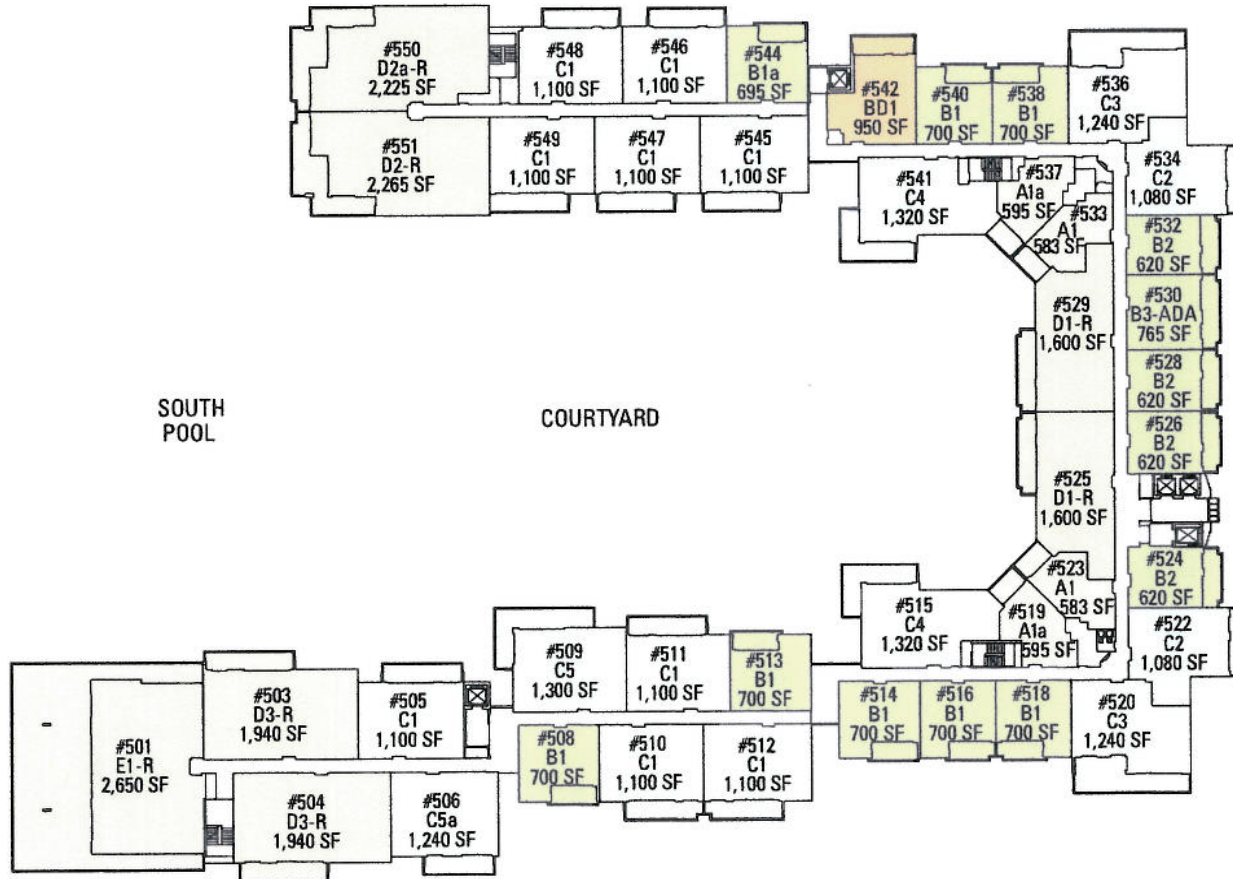


BEACH/OCEAN

SOUTH POOL

COURTYARD

MOUNTAIN VIEW



Subject to change. Developer reserves the right to make changes and modifications at any time without notice.

- A Studio Suite
- B One Bedroom Suite
- BDI One Bedroom & Den
- C Two Bedroom Suite
- D Three Bedroom Residence
- E Three Bedroom Residence

# SIXTH FLOOR

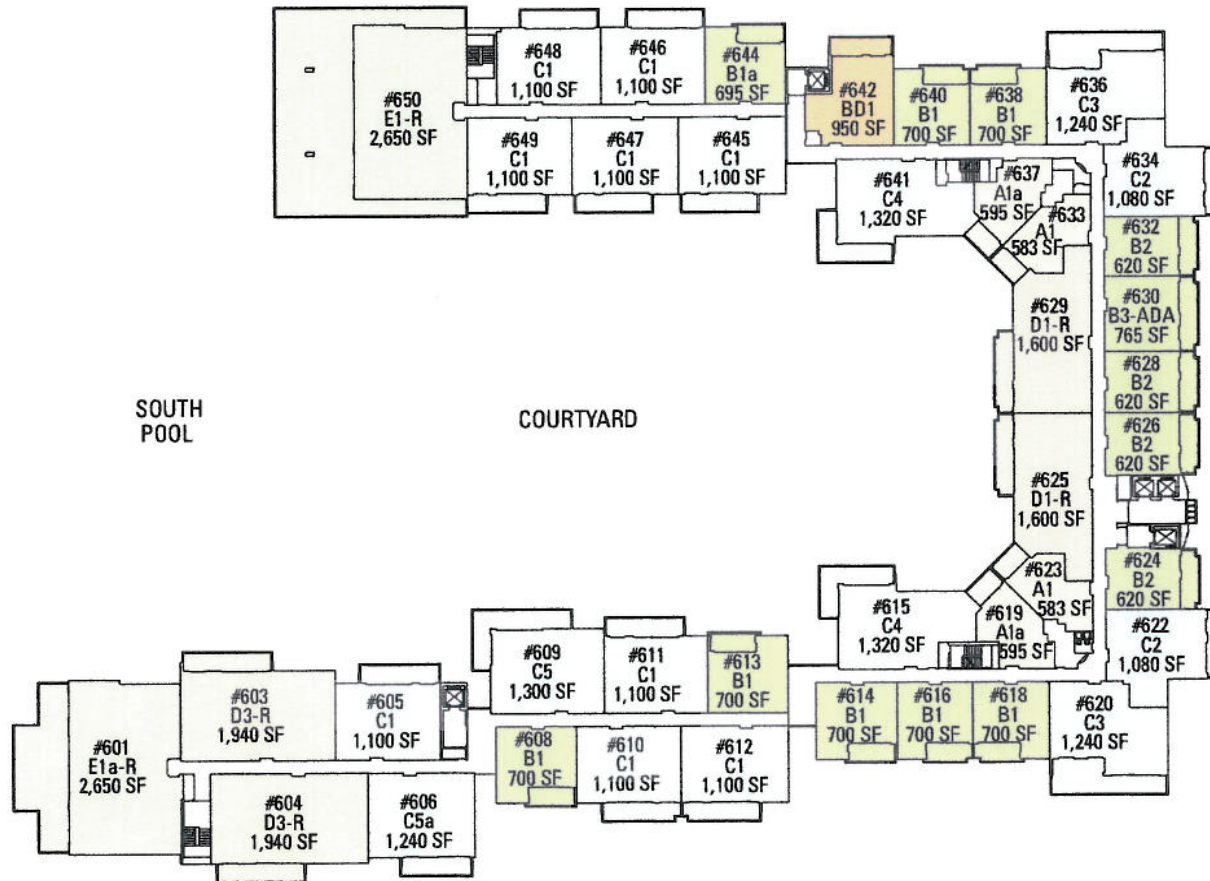


BEACH/OCEAN

SOUTH POOL

COURTYARD

MOUNTAIN VIEW



- A Studio Suite
- B One Bedroom Suite
- BD1 One Bedroom & Den
- C Two Bedroom Suite
- D Three Bedroom Residence
- E Three Bedroom Residence

Subject to change. Developer reserves the right to make changes and modifications at any time without notice.

# SEVENTH FLOOR

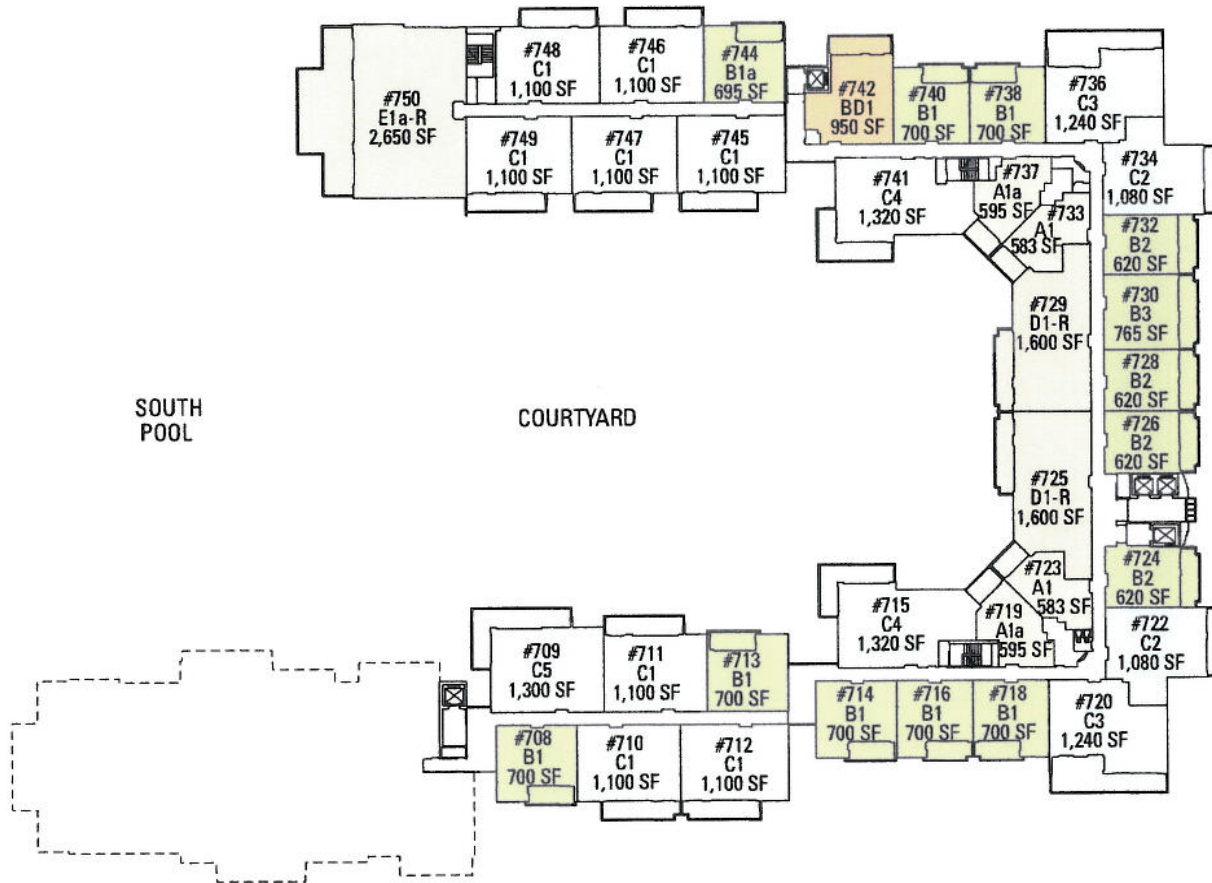


BEACH/OCEAN

SOUTH POOL

COURTYARD

MOUNTAIN VIEW



- A Studio Suite
- B One Bedroom Suite
- BDI One Bedroom & Den
- C Two Bedroom Suite
- D Three Bedroom Residence
- E Three Bedroom Residence

Subject to change. Developer reserves the right to make changes and modifications at any time without notice.

# EIGHTH FLOOR

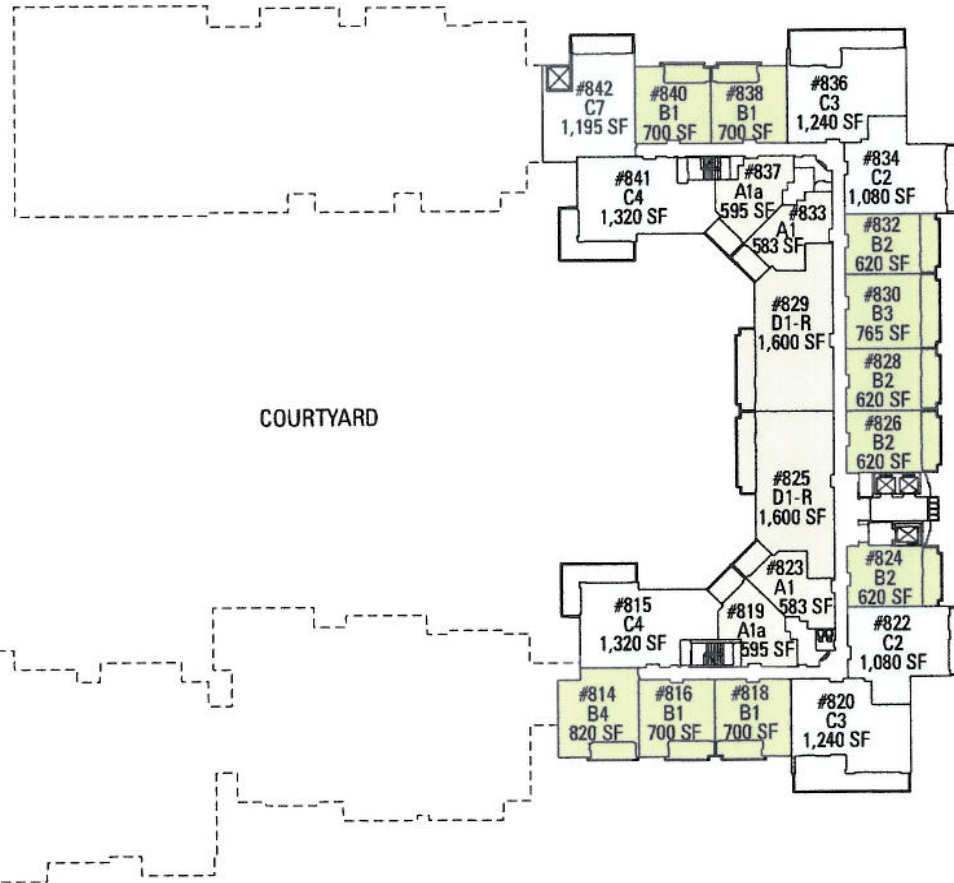


BEACH/OCEAN

SOUTH POOL

COURTYARD

MOUNTAIN VIEW

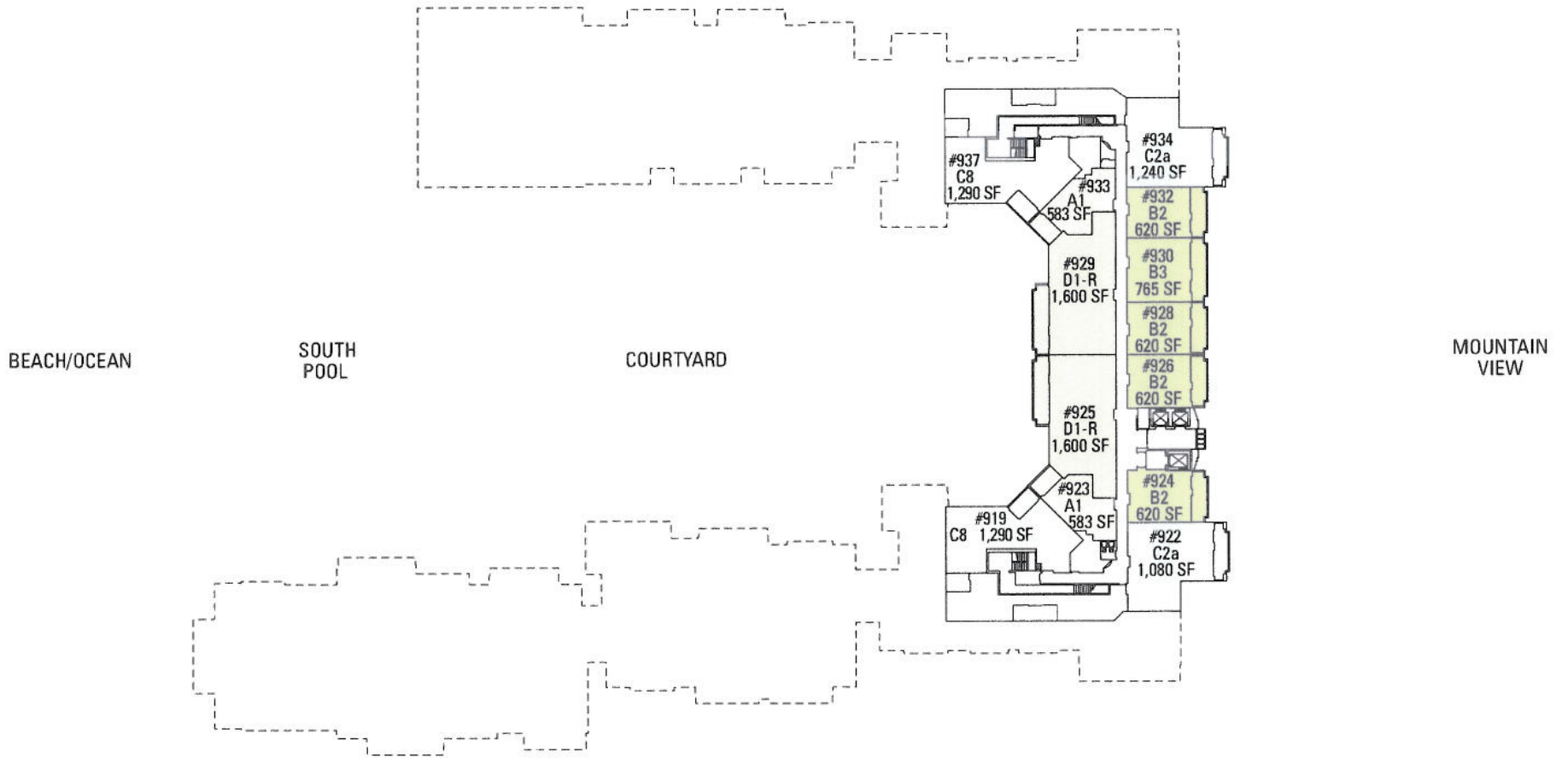


Subject to change. Developer reserves the right to make changes and modifications at any time without notice.

- A Studio Suite
- B One Bedroom Suite
- BDI One Bedroom & Den
- C Two Bedroom Suite
- D Three Bedroom Residence
- E Three Bedroom Residence



# NINTH FLOOR



Subject to change. Developer reserves the right to make changes and modifications at any time without notice.

- A Studio Suite
- B One Bedroom Suite
- BD One Bedroom & Den
- C Two Bedroom Suite
- D Three Bedroom Residence
- E Three Bedroom Residence

# TENTH FLOOR

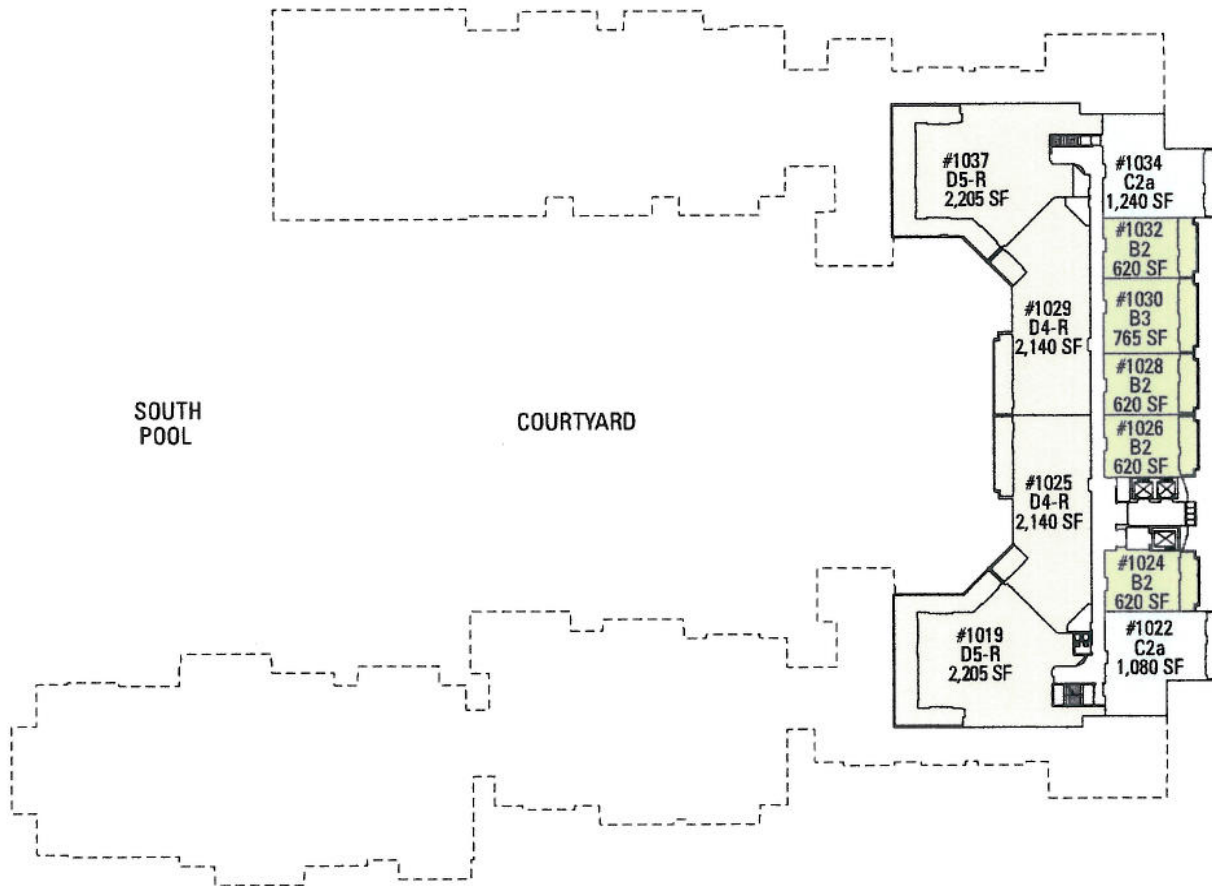


BEACH/OCEAN

SOUTH POOL

COURTYARD

MOUNTAIN VIEW



Subject to change. Developer reserves the right to make changes and modifications at any time without notice.

- A Studio Suite
- B One Bedroom Suite
- BDI One Bedroom & Den
- C Two Bedroom Suite
- D Three Bedroom Residence
- E Three Bedroom Residence