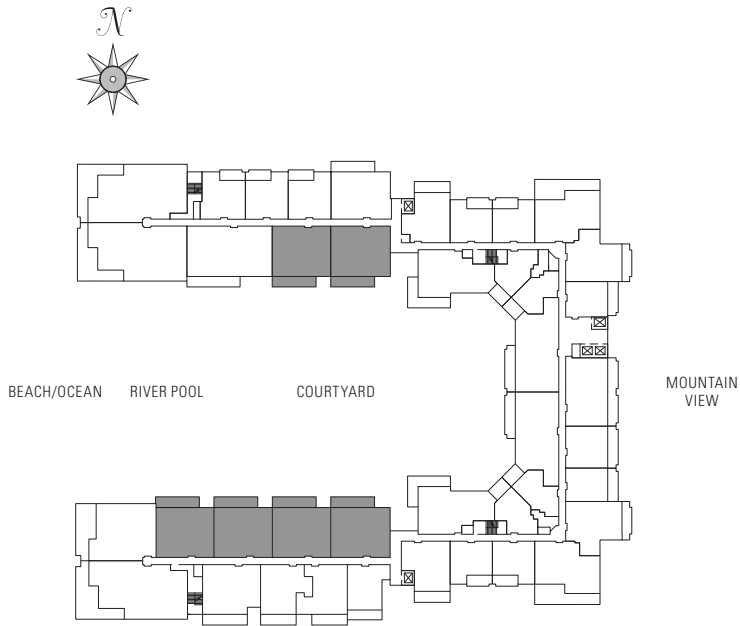
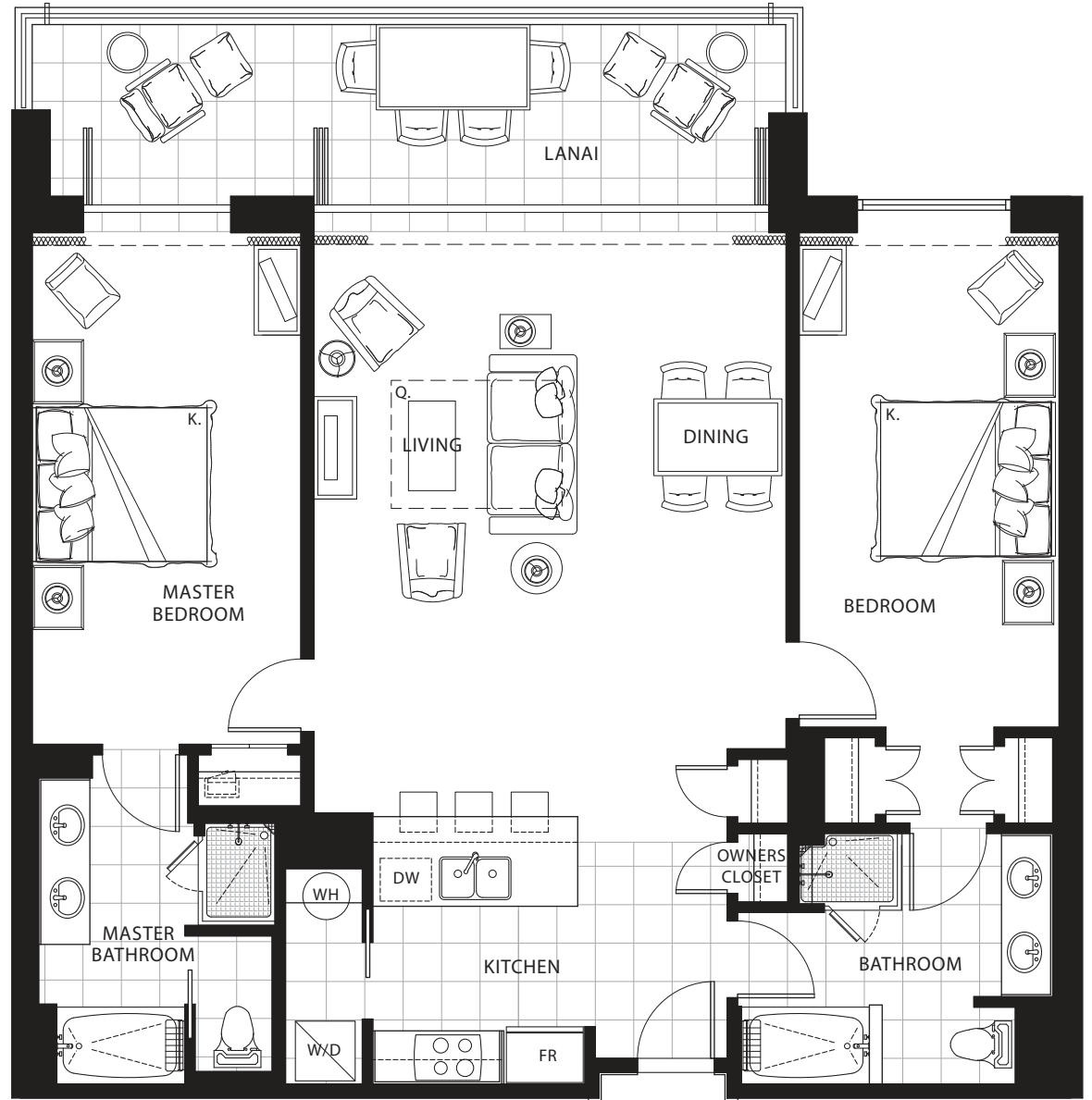


TWO BEDROOM Plan C1a

1,315 sq. ft. Interior
230 sq. ft. Lanai

Suites: 103*, 105*, 107*, 109*, 143*,
145*, 203, 205, 207, 209,
243, 245, 303, 305, 307,
309, 343, 345, 403, 405,
407, 409, 443, 445, 503,
505, 507, 509, 543, 545,
603, 605, 607, 609, 643,
645, 703, 705, 707, 709,
743, 745

* Lanai area larger than noted



Subject to change. Developer reserves the right to make changes and modifications at any time without notice.

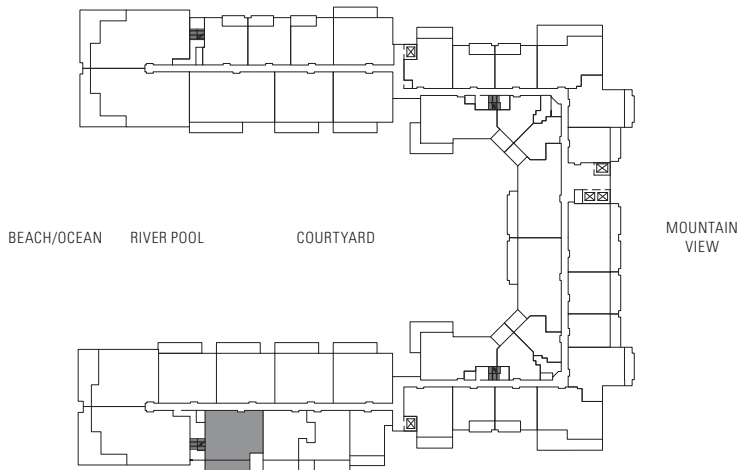
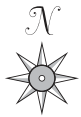
TWO BEDROOM Plan C1b

1,250 sq. ft. Interior

230 sq. ft. Lanai

Suites: 104*, 204, 304, 404, 504,
604, 704

* Lanai area larger than noted



Subject to change. Developer reserves the right to make changes and modifications at any time without notice.

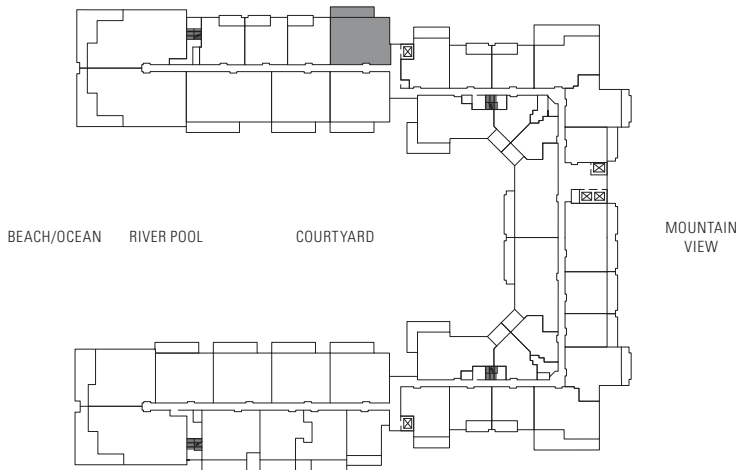
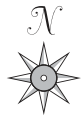
TWO BEDROOM Plan C1c

1,230 sq. ft. Interior

230 sq. ft. Lanai

Suites: 142*, 242, 342, 442, 542,
642, 742

* Lanai area larger than noted



Subject to change. Developer reserves the right to make changes and modifications at any time without notice.

TWO BEDROOM

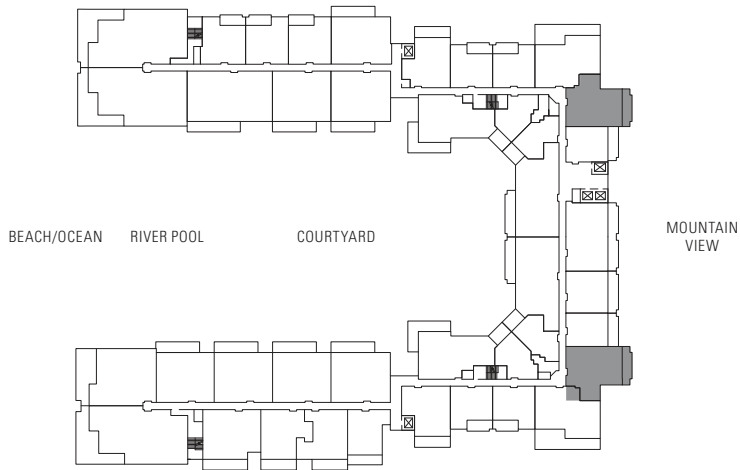
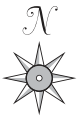
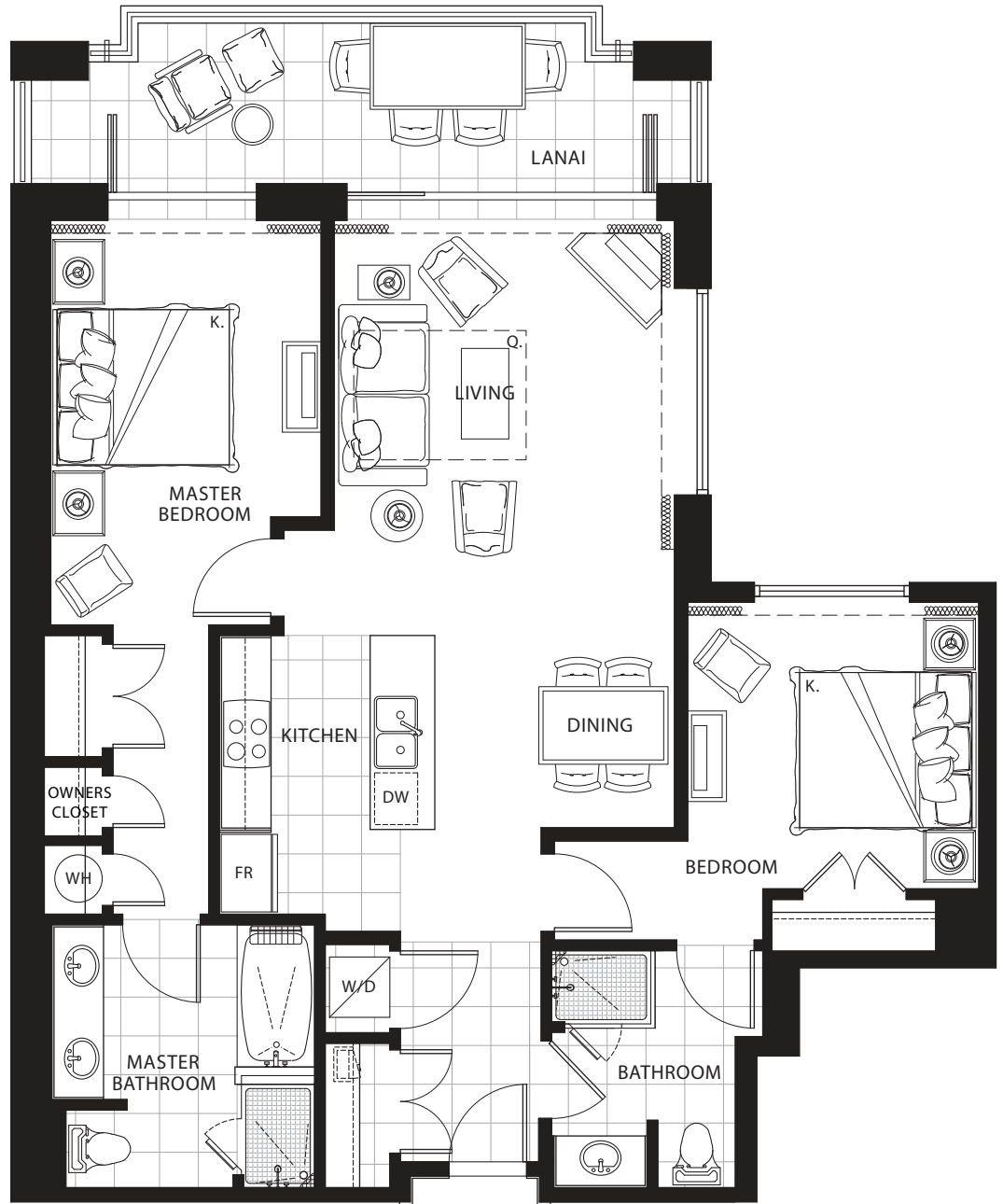
Plan C2

1,080 sq. ft. Interior

165 sq. ft. Lanai

Suites: 220*, 232*, 320, 332, 420,
432, 520, 532, 620, 632,
720, 732, 820, 832

* Lanai area larger than noted



Subject to change. Developer reserves the right to make changes and modifications at any time without notice.



HONUA KAI
KONEA ENCLAVE

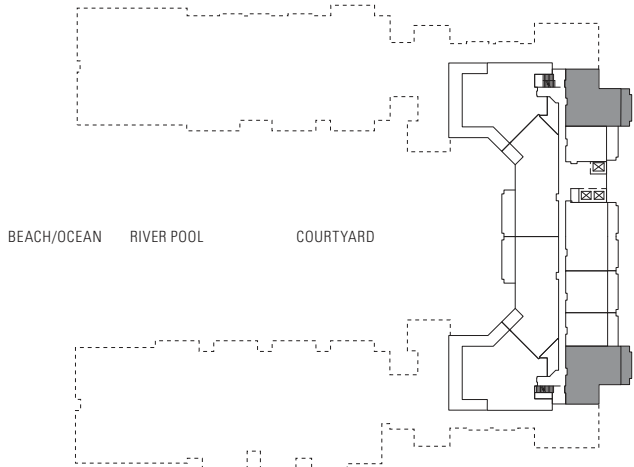
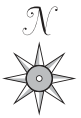
TWO BEDROOM

Plan C2a

1,215 sq. ft. Interior

165 sq. ft. Lanai

Suites: 920, 932, 1020, 1032



Subject to change. Developer reserves the right to make changes and modifications at any time without notice.

TWO BEDROOM

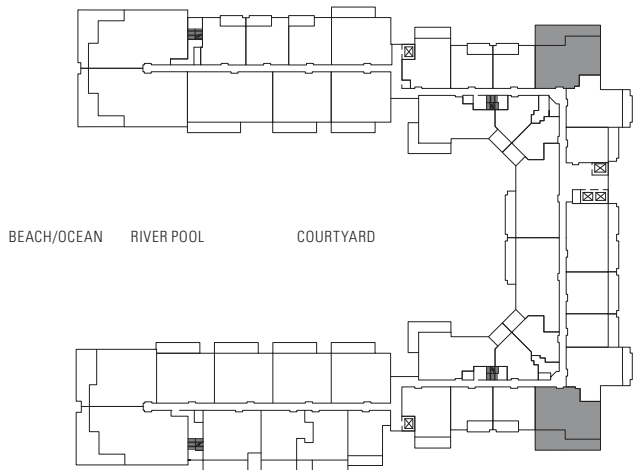
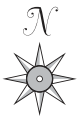
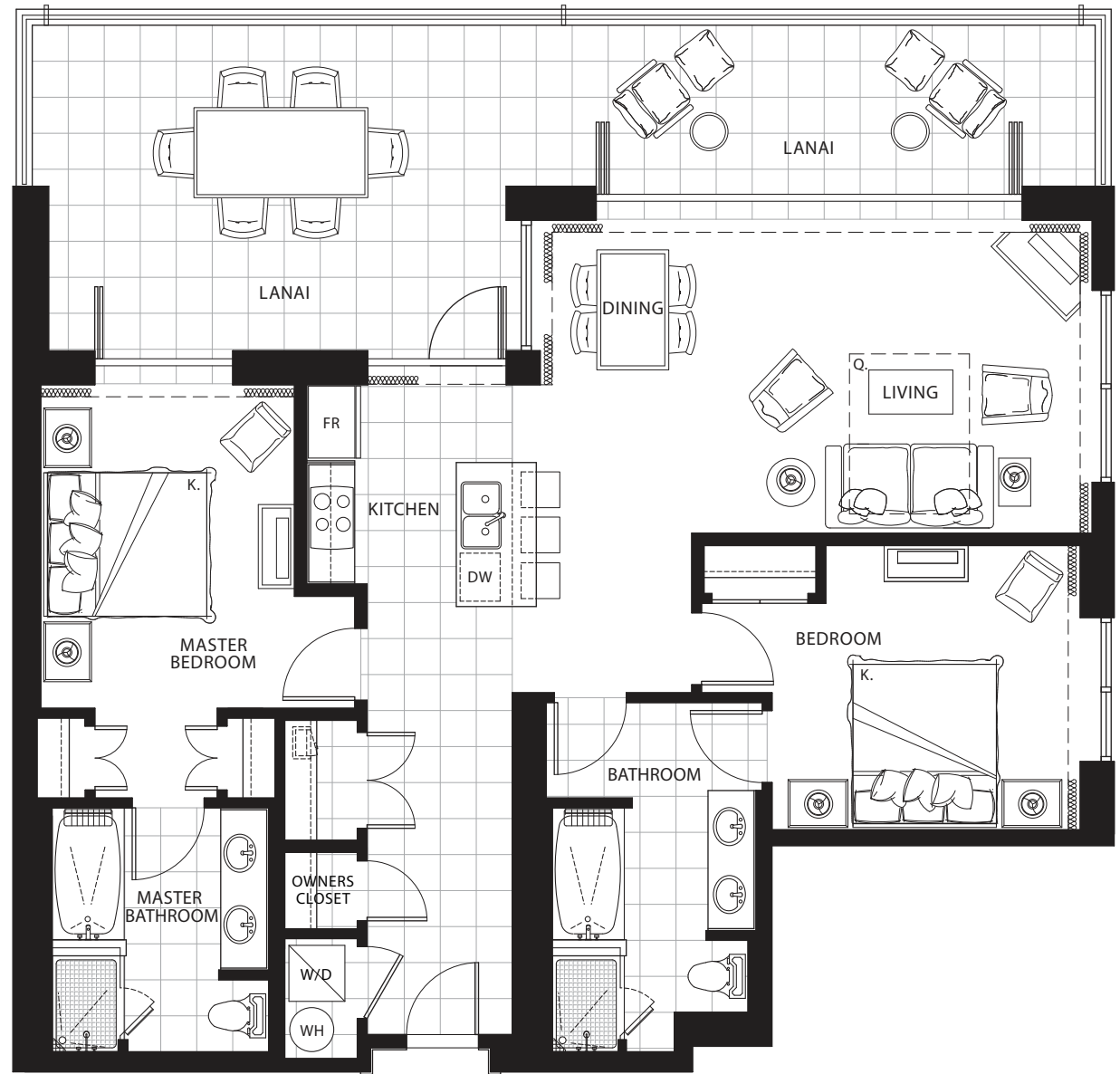
Plan C3

1,230 sq. ft. Interior

470 sq. ft. Lanai

Suites: 218*, 234*, 518, 534, 618,
634, 718, 734, 818, 834

* Lanai area larger than noted



Subject to change. Developer reserves the right to make changes and modifications at any time without notice.



HONUA KAI
KONEA ENCLAVE

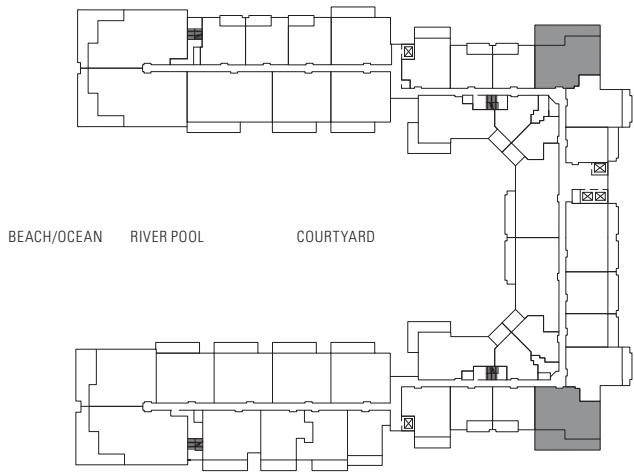
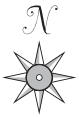
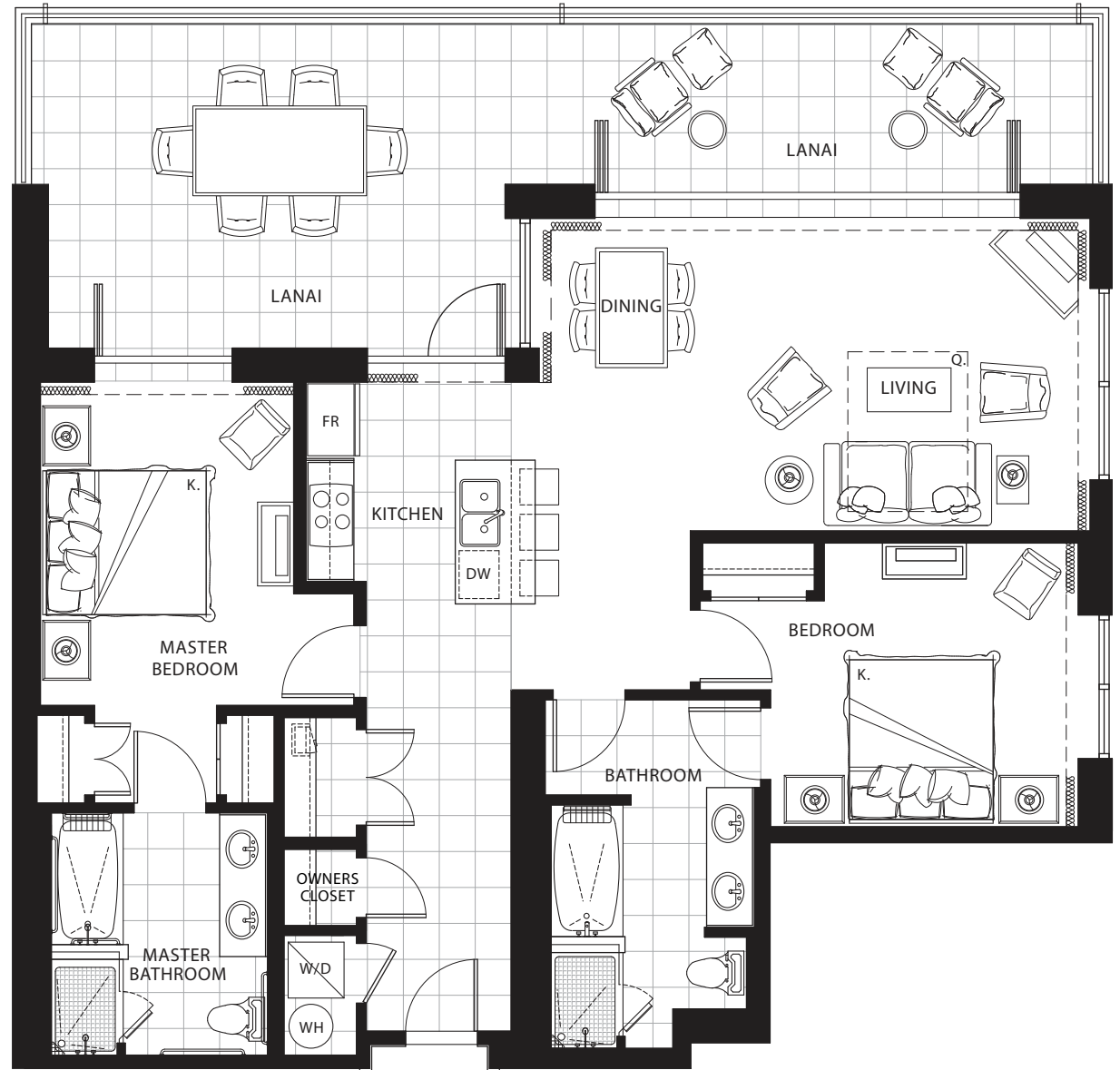
TWO BEDROOM

Plan C3-ADA

1,230 sq. ft. Interior

470 sq. ft. Lanai

Suites: 318, 334, 418, 434



Subject to change. Developer reserves the right to make changes and modifications at any time without notice.

TWO BEDROOM

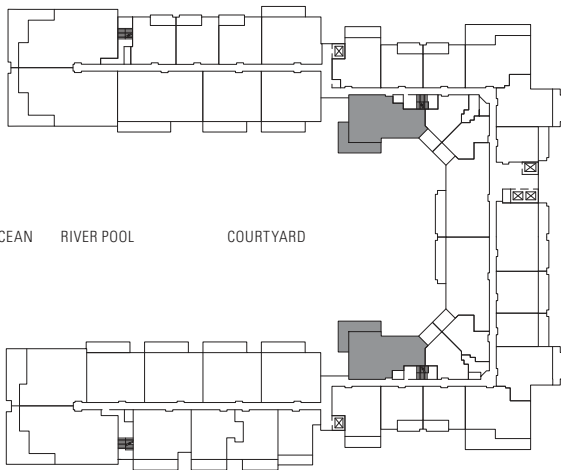
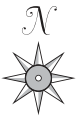
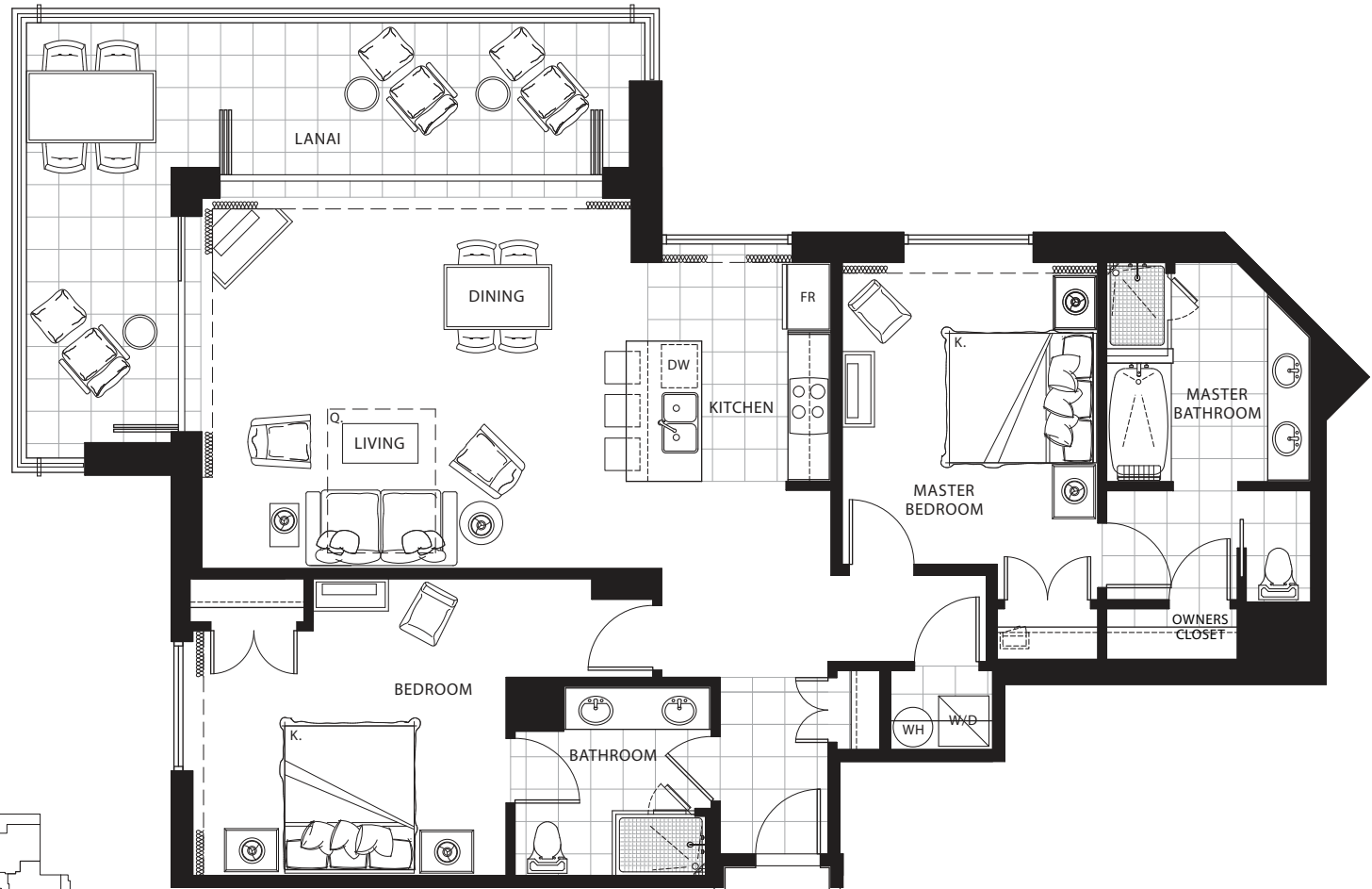
Plan C4

1,325 sq. ft. Interior

315 sq. ft. Lanai

Suites: 113,* 139,* 213,
239, 313, 339,
413, 439, 513,
539, 613, 639,
713, 739, 813,
839

* Lanai area larger than noted



BEACH/OCEAN RIVER POOL COURTYARD

MOUNTAIN VIEW

Subject to change. Developer reserves the right to make changes and modifications at any time without notice.

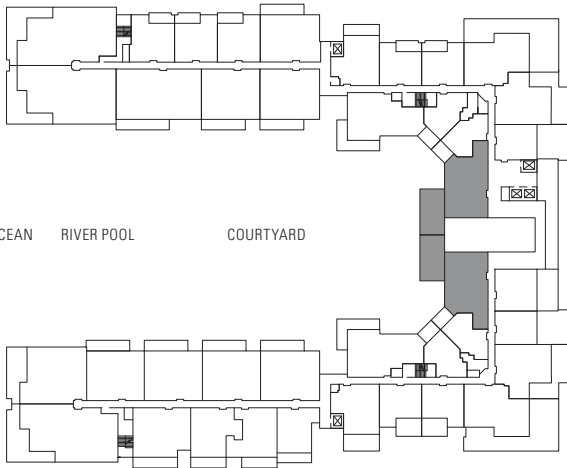
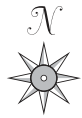
TWO BEDROOM

Plan C6

1,235 sq. ft. Interior

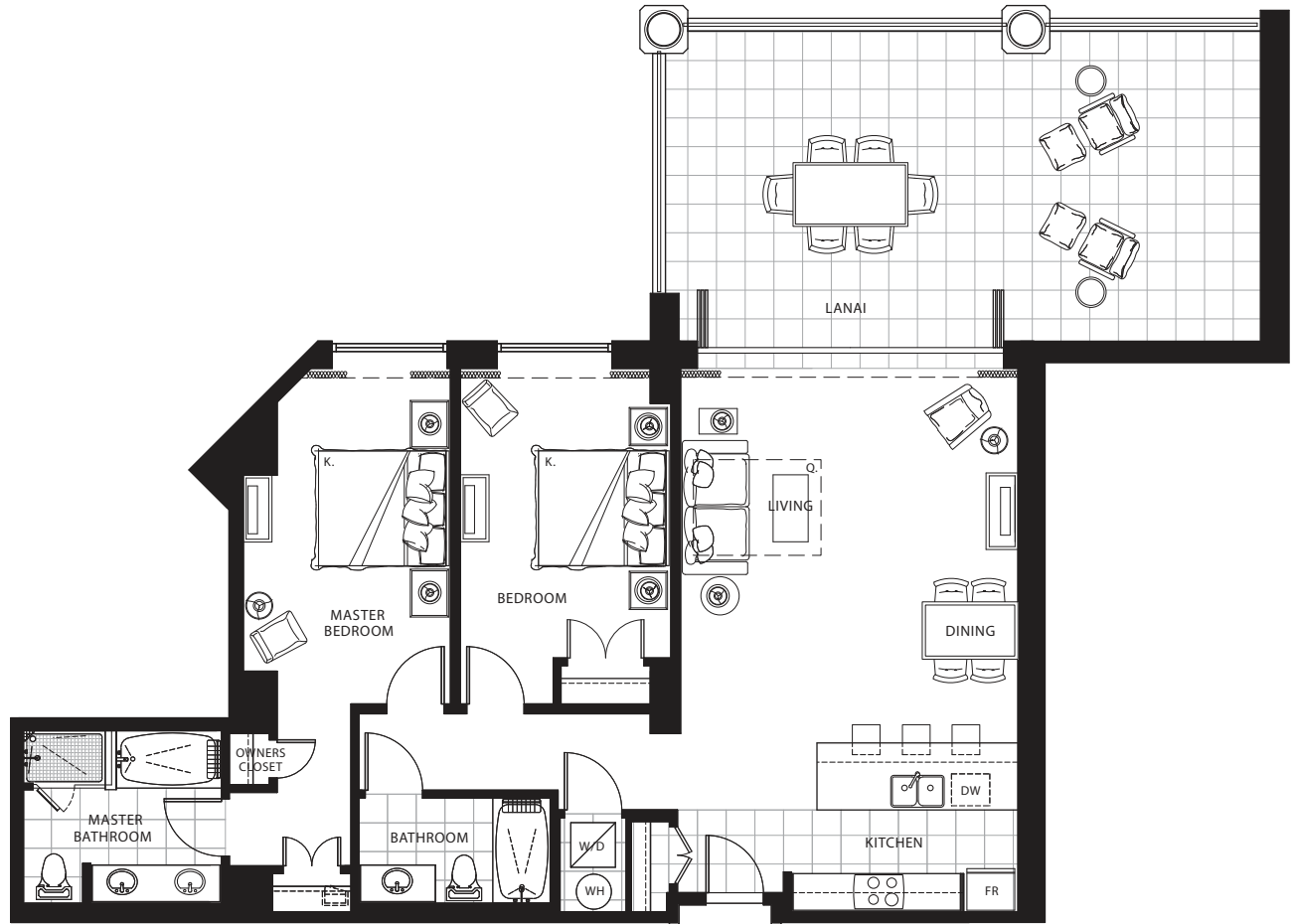
475 sq. ft. Lanai

Suites: 225, 229



BEACH/OCEAN RIVER POOL COURTYARD

MOUNTAIN VIEW



Subject to change. Developer reserves the right to make changes and modifications at any time without notice.



HONUA KAI
KONEA ENCLAVE

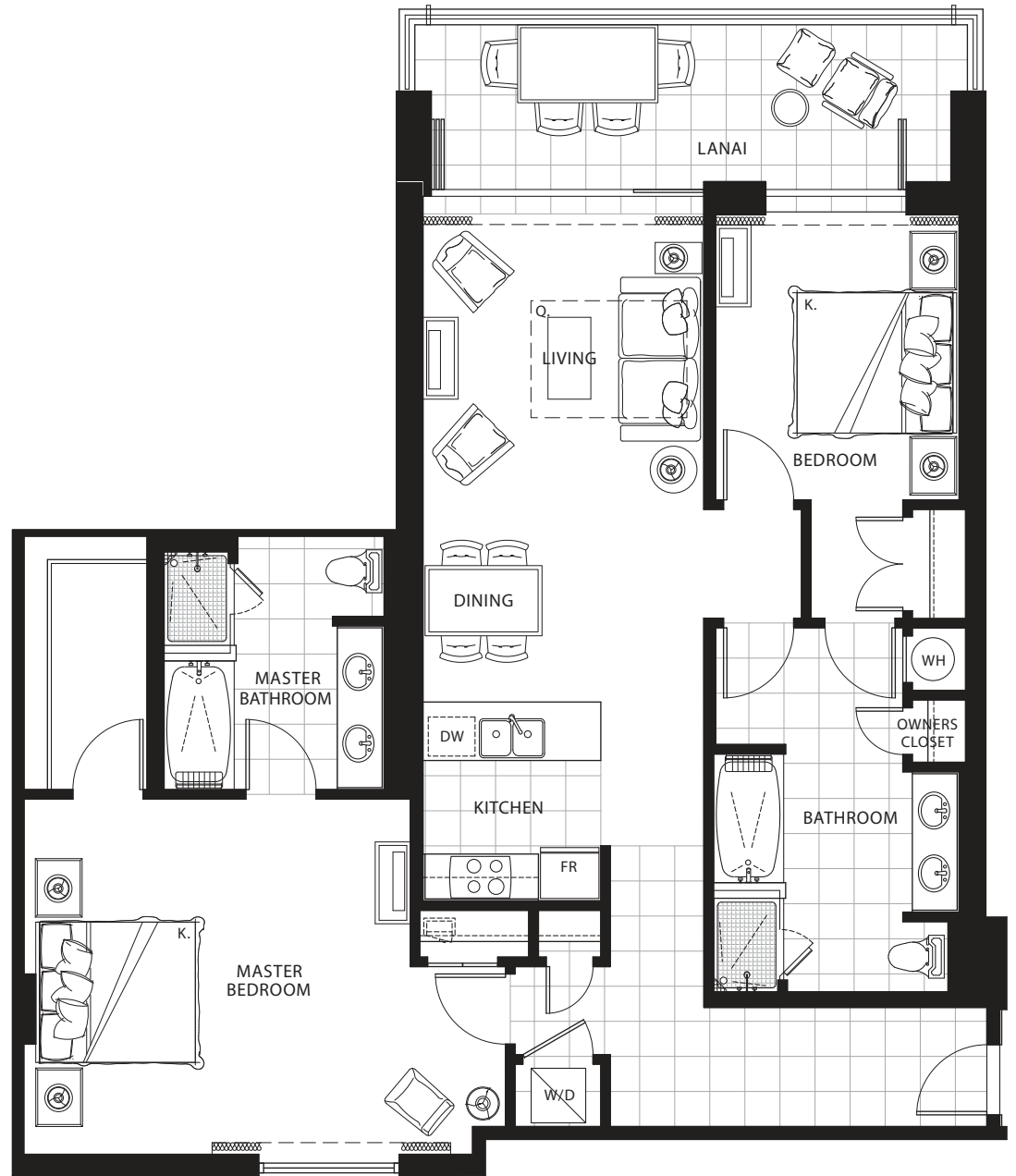
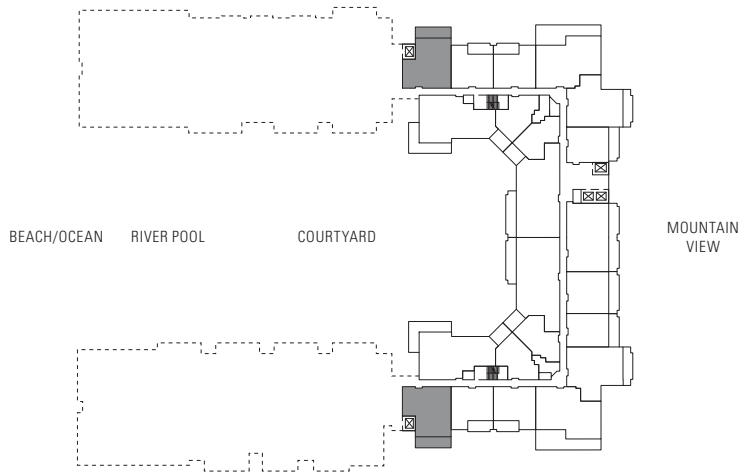
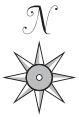
TWO BEDROOM

Plan C7a

1,350 sq. ft. Interior

175 sq. ft. Lanai

Suites: 812, 840



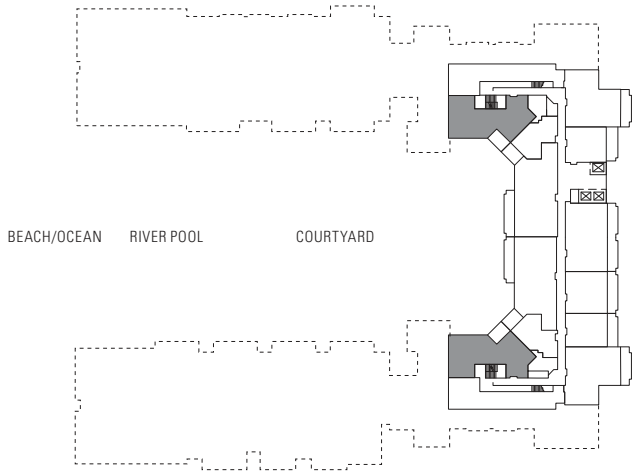
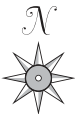
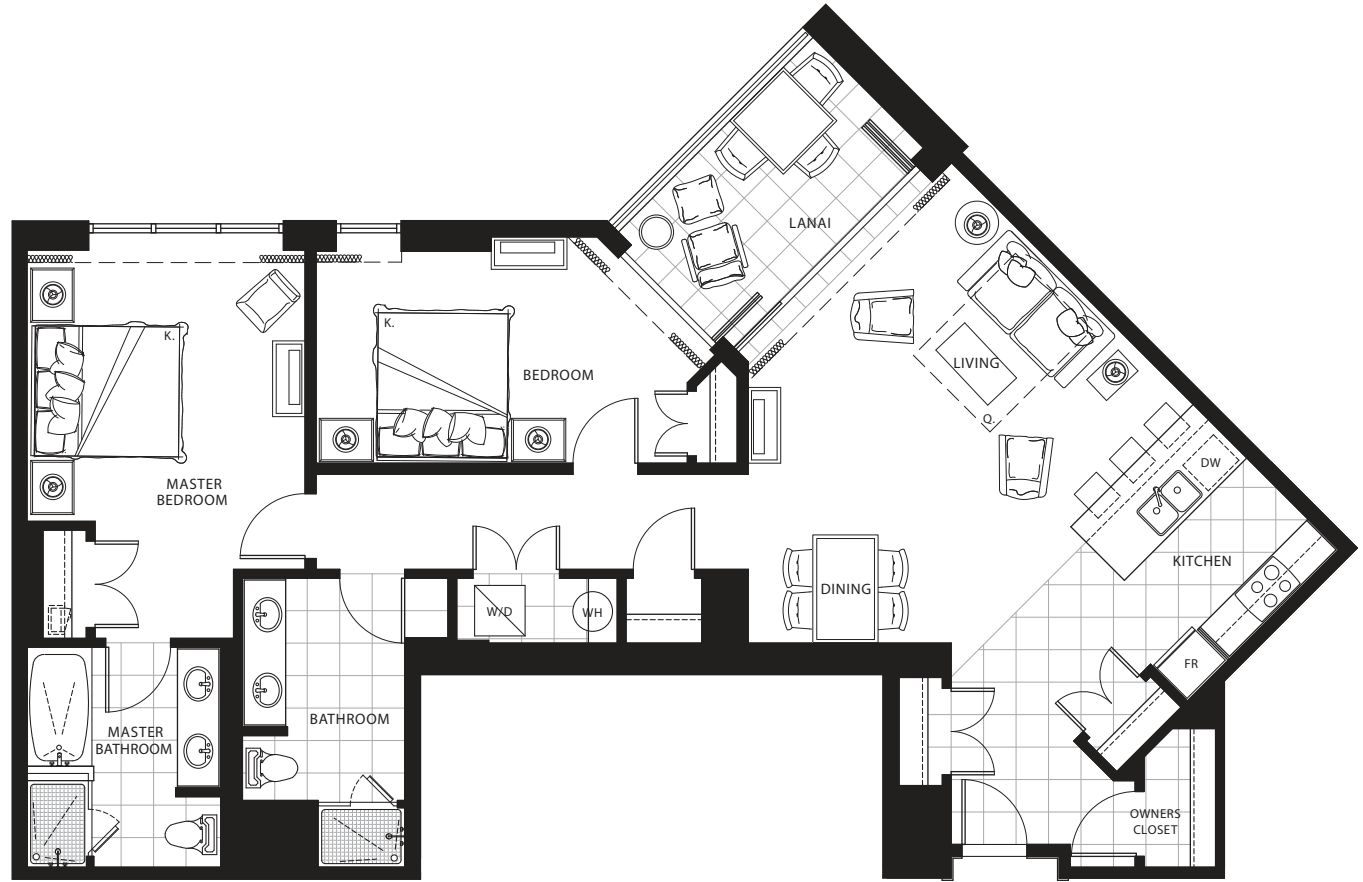
Subject to change. Developer reserves the right to make changes and modifications at any time without notice.

TWO BEDROOM Plan C8

1,280 sq. ft. Interior

100 sq. ft. Lanai

Suites: 919, 933



Subject to change. Developer reserves the right to make changes and modifications at any time without notice.

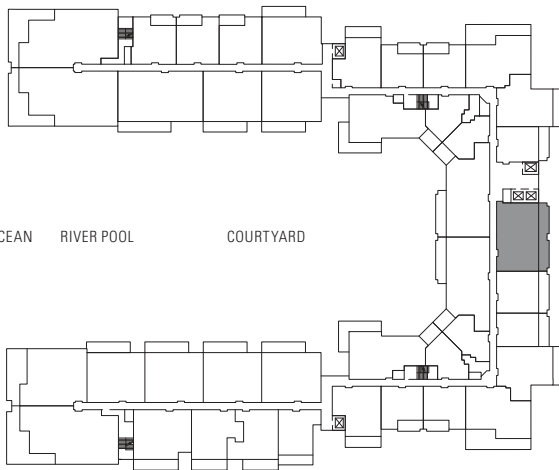
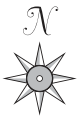
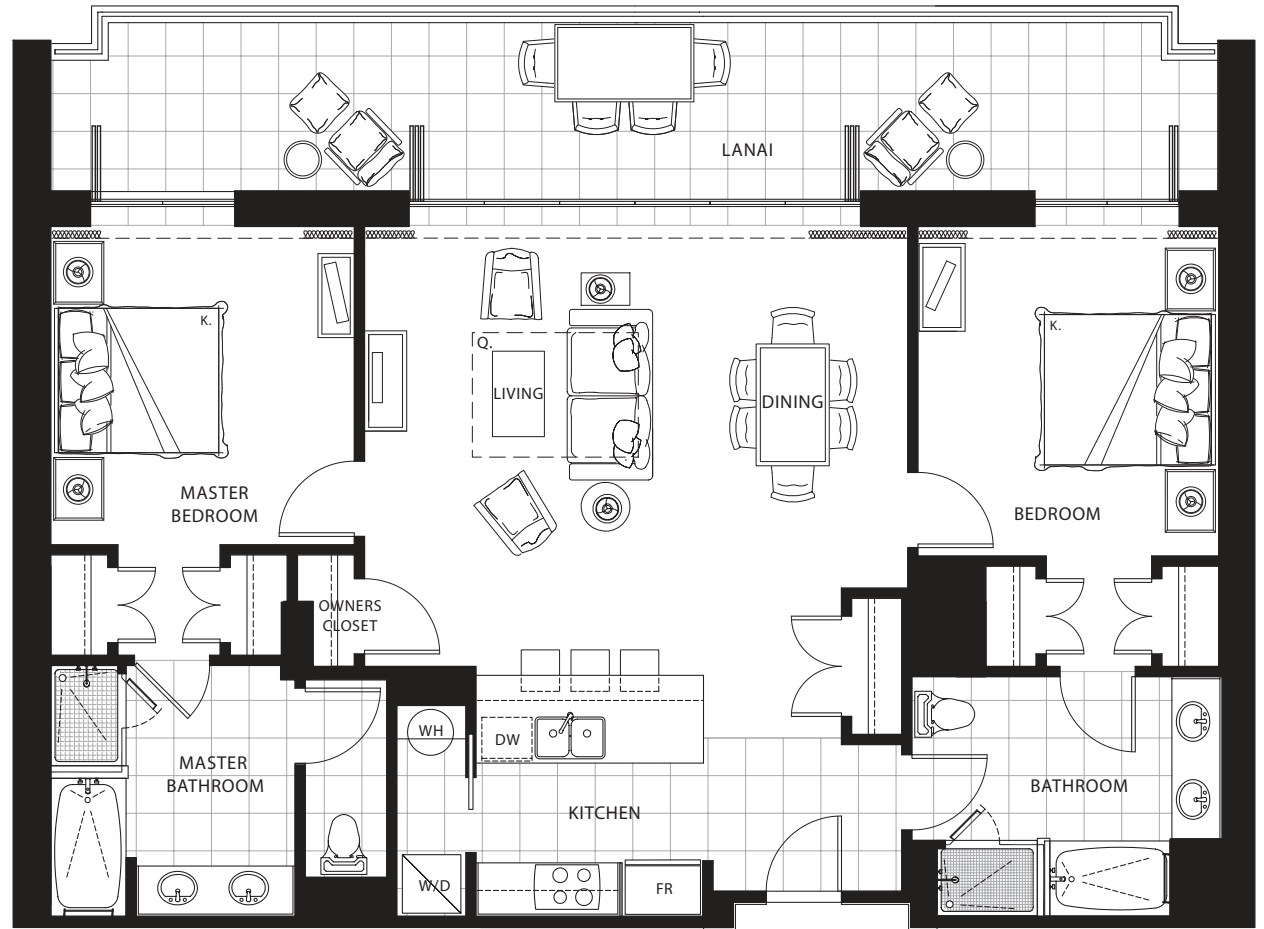
TWO BEDROOM

Plan C9

1,285 sq. ft. Interior

350 sq. ft. Lanai

Suites: 326, 426, 526, 626, 726,
826, 926, 1026



BEACH/OCEAN RIVER POOL COURTYARD

MOUNTAIN VIEW

Subject to change. Developer reserves the right to make changes and modifications at any time without notice.



HONUA KAI
KONEA ENCLAVE

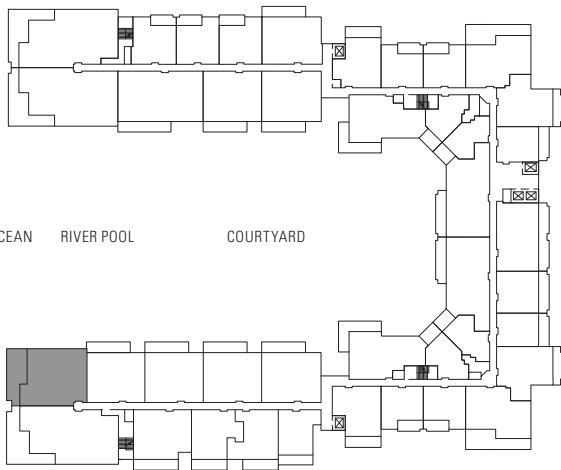
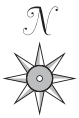
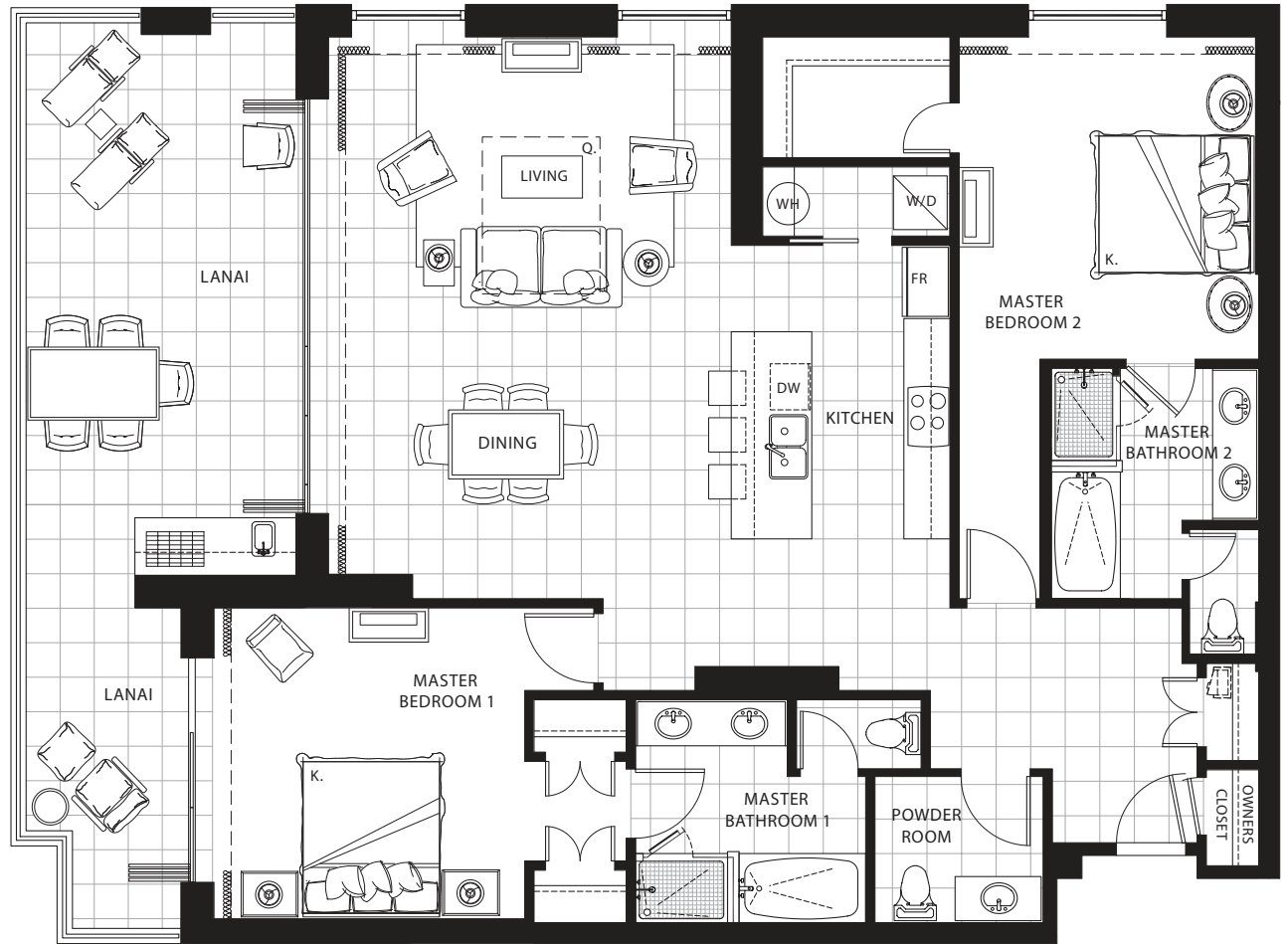
TWO BEDROOM Plan C10

1,620 sq. ft. Interior

415 sq. ft. Lanai

Suites: 101,* 201, 301, 401, 501

* Lanai area larger than noted



BEACH/OCEAN RIVER POOL COURTYARD

MOUNTAIN VIEW

Subject to change. Developer reserves the right to make changes and modifications at any time without notice.